

Wall mounted receptacle CEEplus

Part no. 955

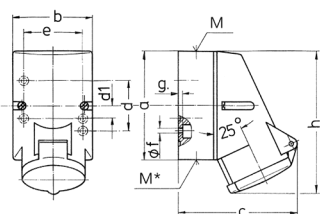


- screw terminals
- with 4 additional contacts
- internal fastening
- one cable entry at top (M 20), one blind entry (M 20 can be cut out) at the bottom
- for solid supply lines for auxiliary contacts, an additional adapter is required

Technical specifications

Ampere	16 A
Poles	3 p+a
Voltage	230 V
Clock position	6 h
Hertz	50-60 Hz
Connection technology	Screw terminals
Contact	standard
Protection type	IP 44
Weight	219 g

Drawing



Drawing 1 MB 209	Amp. Poles	16		
		3	4	5
Dim. in mm	a	87	100	100
	b	64	75	75
	c	99	110	113
	d	40	-	-
	d1	-	11	11
	e	50	59	59
	f	4.5	5	5
	g	4	4	4
	h	115	125	128
	M	20	20	20
	M*	M20 (blind) to be cut out		
	Max. cable diam. (mm)	15	15	15
	Terminal for cond. cross section (mm ²) min-max.	1.5	1.5	1.5
		-4	-4	-4