

Panel mounted receptacle

Part no. 75322

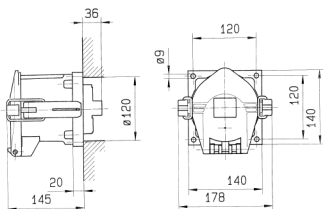


- EcoLine
- aluminum enclosure
- Screw terminals
- seawater resistant products are available on request

Technical specifications

Ampere	250 A
Poles	4 p
Voltage	500 V
Clock position	7 h
Hertz	50-60 Hz
Connection technology	Screw terminals
Contact	standard
Protection type	IP67
Weight	3200 g

Drawing



Drawing
1 MB 384
Dim. in mm