

Panel mounted receptacle

Part no. 75246

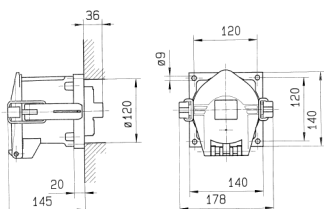


- EcoLine
- aluminum enclosure
- Screw terminals
- seawater resistant products are available on request

Technical specifications

Ampere	200 A
Poles	5 p
Voltage	400 V
Clock position	6 h
Hertz	60-50 Hz
Connection technology	Screw terminals
Contact	standard
Protection type	IP67
Weight	3200 g

Drawing



Drawing
1 MB 384
Dim. in mm