

## Wall mounted receptacle

Part no. 75036

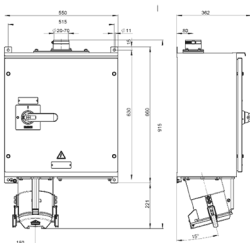


- Screw terminals
- switched
- mechanical interlock
- cable entry bushing for cables of 20 mm up to 70 mm at top and blind flange at bottom
- enclosure made of sheet steel, painted in RAL 1021
- external fixing
- seawater resistant products are available on request

## Technical specifications

Ampere	400 A
Poles	4 p
Voltage	400 V
Clock position	6 h
Hertz	50-60 Hz
Connection technology	Screw terminals
Contact	standard
Protection type	IP55
Weight	39000 g

## Drawing



Drawing  
1 MB 403/2  
Dim. in mm