

Wall mounted receptacle
Part no. 7233

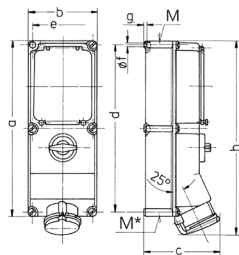


- screw terminals
- switched
- mechanical DUO-interlock
- circuit breaker, K-characteristics and RCD (0.03 A)
- other leakage current ratings on request
- receptacles can be padlocked

Technical specifications

| | |
|---------------------------|-----------------|
| Ampere | 32 A |
| Poles | 5 p |
| Voltage | 400 V |
| Clock position | 6 h |
| Hertz | 50-60 Hz |
| Connection technology | Screw terminals |
| Contact | standard |
| Protection type | IP44 |
| Enclosure material | Plastic |
| Weight | 2812 g |
| Declaration of Conformity | EAC |

Drawing



| | | | | | | | | |
|---------------------|--|-------|-------|-------|-------|-------|------|------|
| Drawing 1 MB 208 | Amp. Poles | 16 | | | 32 | | 63 | |
| | | 3 | 4 | 5 | 4 | 5 | 4 | 5 |
| Dim. in mm | a | 364 | 364 | 364 | 364 | 364 | 460 | 460 |
| | b | 134 | 134 | 134 | 134 | 134 | 180 | 180 |
| | c | 160 | 162 | 163 | 168 | 168 | 195 | 195 |
| | d | 347 | 347 | 347 | 347 | 347 | 440 | 440 |
| | e | 117 | 117 | 117 | 117 | 117 | 160 | 160 |
| | f | 6.3 | 6.3 | 6.3 | 6.3 | 6.3 | 8.1 | 8.1 |
| | g | 8 | 8 | 8 | 8 | 8 | 8 | 8 |
| | h | 391 | 395 | 398 | 408 | 411 | 502 | 502 |
| | M | 32/40 | 32/40 | 32/40 | 32/40 | 32/40 | 40 | 40 |
| | M* | 2x32 | 2x32 | 2x32 | 2x32 | 2x32 | 2x40 | 2x40 |
| | Max. cable diam. (mm) | 27 | 27 | 27 | 27 | 27 | 27 | 27 |
| | Terminal for cond. cross section (mm²) min.-max. | 1.5 | 1.5 | 1.5 | 2.5 | 2.5 | 6 | 6 |