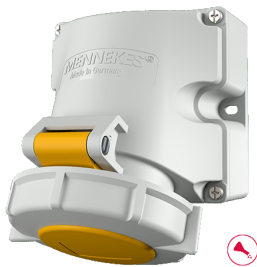


## Wall mounted receptacle with TwinCONTACT

Part no. 9140

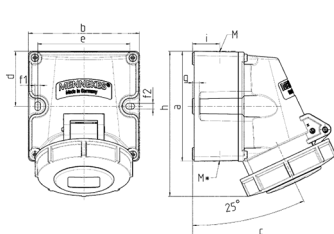


- screwless spring terminals
- highly resistant to chemicals
- suitable for through wiring
- with 2 external fixing points
- receptacles are designed for adding an auxiliary contact switch
- enclosure base can be turned 180°

### Technical specifications

|                           |                         |
|---------------------------|-------------------------|
| Ampere                    | 16 A                    |
| Poles                     | 5 p                     |
| Voltage                   | 110 V                   |
| Clock position            | 4 h                     |
| Hertz                     | 50-60 Hz                |
| Connection technology     | Screwless - TwinCONTACT |
| Contact                   | standard                |
| Protection type           | IP 67                   |
| Weight                    | 379 g                   |
| Declaration of Conformity | EAC, CQC                |

### Drawing



| Drawing<br>1 MB 622   | Amp.<br>Poles | 16                         |      |      | 32                         |      |      |
|---|---------------|----------------------------|------|------|----------------------------|------|------|
|   |               | 3                          | 4    | 5    | 3                          | 4    | 5    |
| Dim. in mm  | a             | 100                        | 100  | 100  | 100                        | 100  | 100  |
|   | b             | 101                        | 101  | 101  | 109                        | 109  | 109  |
|   | c             | 117                        | 125  | 131  | 157                        | 157  | 160  |
|   | d             | 50                         | 50   | 50   | 50                         | 50   | 50   |
|   | e             | 84                         | 84   | 84   | 92                         | 92   | 92   |
|   | f1            | 5.3                        | 5.3  | 5.3  | 5.3                        | 5.3  | 5.3  |
|   | f2            | 5.3                        | 5.3  | 5.3  | 5.3                        | 5.3  | 5.3  |
|   | g             | 6.5                        | 6.5  | 6.5  | 6.5                        | 6.5  | 6.5  |
|   | h             | 131                        | 131  | 132  | 148                        | 148  | 148  |
|   | i             | 24.7                       | 24.7 | 24.7 | 27.5                       | 27.5 | 27.5 |
|   | M             | 25 (optional M20)          |      |      | 32 (optional M25)          |      |      |
|   | M*            | 2x25 (blind) to be cut out |      |      | 2x25 (blind) to be cut out |      |      |
| Max. cable diam. (mm)   |               | 18 (M25) and 15 (M20)      |      |      | 25 (M32) and 18 (M25)      |      |      |
| Terminal for cond. cross section (mm <sup>2</sup> ) min.-max. |               | 1.5                        | 1.5  | 1.5  | 2.5                        | 2.5  | 2.5  |
|   |               | -4                         | -4   | -4   | -6                         | -6   | -6   |