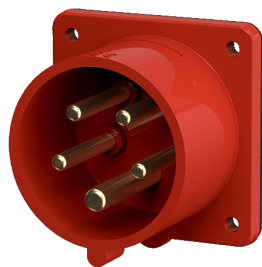


Panel mounted phase inverter inlet
Part no. 854

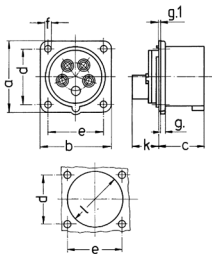


- screw terminals
- a retaining nose to hold the hinged lid of the connector must be provided by the customer in order to ensure satisfactory locking

Technical specifications

Ampere	16 A
Poles	5 p
Voltage	400 V
Clock position	6 h
Hertz	50-60 Hz
Connection technology	Screw terminals
Contact	standard
Protection type	IP 44
Weight	127 g
Declaration of Conformity	EAC, VDE (ÜG)

Drawing



Drawing	Amp.	16
2 MB 68/853	Poles	5
Dim. in mm	a	75
	b	75
	c	42
	d	60
	e	60
	f	5,5
	g.	7,3
	g.1	2
	k	13
	l	52
Terminal for cond. cross		1
section (mm²) min.-max.		—2.5