

Panel mounted receptacle
Part no. 7538

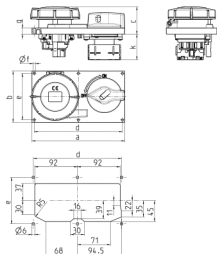


- switched
- with mechanical DUO-interlock
- with highly heat resistant contact carrier and nickel plated contacts
- horizontal design
- with load break switch KH32 3 p

Technical specifications

| | |
|-----------------------|-----------------|
| Ampere | 32 A |
| Poles | 4 p |
| Voltage | 400-440 V |
| Clock position | 3 h |
| Hertz | 50-60 Hz |
| Connection technology | Screw terminals |
| Contact | standard |
| Protection type | IP 67 |
| Enclosure material | Plastic |
| Weight | 758 g |

Drawing



| | | | | | | | |
|--------------------|---------------|-----|-----|-----|-----|-----|-----|
| Drawing 5 MB 57 | Amp. Poles | 16 | | | 32 | | |
| | | 3 | 4 | 5 | 3 | 4 | 5 |
| Dim. in mm | a | 200 | 200 | 200 | 200 | 200 | 200 |
| | b | 110 | 110 | 110 | 110 | 110 | 110 |
| | c | 47 | 50 | 51 | 59 | 59 | 60 |
| | d | 190 | 190 | 190 | 190 | 190 | 190 |
| | e | 100 | 100 | 100 | 100 | 100 | 100 |
| | f | 5 | 5 | 5 | 5 | 5 | 5 |
| | g | 13 | 13 | 13 | 13 | 13 | 13 |
| | k max. | 56 | 56 | 56 | 56 | 56 | 56 |