

**Plug StarTOP® with SafeCONTACT**  
Part no. 717

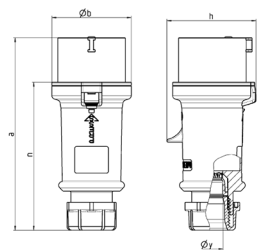


- screwless, with insulating displacing technique
- cable gland and sealing
- strain relief and protection against kinking
- enclosure with thread lock and safety slide

Technical specifications

Ampere	32 A
Poles	4 p
Voltage	230 V
Clock position	9 h
Hertz	50-60 Hz
Connection technology	Screwless - SafeCONTACT
Contact	standard
Protection type	IP 44
Weight	296 g
Declaration of Conformity	EAC, CQC

Drawing



Drawing 2 MB 214		16			32		
		Amp. Poles	3	4	5	3	4
Dim. in mm	a	148	160	160	197	197	197
	b	55	65.6	65.6	75	75	75
	h	61	72.5	72.5	80.5	80.5	85
	n	112	123.5	123.5	152	152	152
	y	14.5	16	16	22	22	22
Terminal for cond. cross		1	1	1	2.5	2.5	2.5
section (mm²) min.-max.		—2.5	—2.5	—2.5	—6	—6	—6