

## Wall mounted receptacle

Part no. 5604A

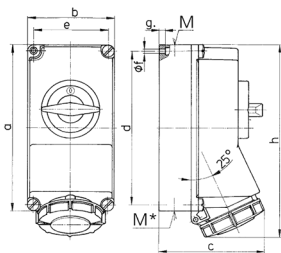


- screw terminals
- switched
- mechanical DUO-interlock
- receptacles can be padlocked

## Technical specifications

|                           |                 |
|---------------------------|-----------------|
| Ampere                    | 32 A            |
| Poles                     | 4 p             |
| Voltage                   | 230 V           |
| Clock position            | 9 h             |
| Hertz                     | 50-60 Hz        |
| Connection technology     | Screw terminals |
| Contact                   | standard        |
| Protection type           | IP 67           |
| Enclosure material        | Plastic         |
| Weight                    | 1180 g          |
| Declaration of Conformity | EAC, CQC        |

## Drawing



| Drawing<br>1 MB 207 | Amp.<br>Poles                        | 16              |      |      | 32              |      |      |
|---------------------|--------------------------------------|-----------------|------|------|-----------------|------|------|
|                     |                                      | 3               | 4    | 5    | 3               | 4    | 5    |
| Dim. in mm          | a                                    | 225             | 225  | 225  | 225             | 225  | 225  |
|                     | b                                    | 118             | 118  | 118  | 118             | 118  | 118  |
|                     | c                                    | 144             | 146  | 147  | 152             | 152  | 153  |
|                     | d                                    | 208             | 208  | 208  | 208             | 208  | 208  |
|                     | e                                    | 101             | 101  | 101  | 101             | 101  | 101  |
|                     | f                                    | 6.3             | 6.3  | 6.3  | 6.3             | 6.3  | 6.3  |
|                     | g                                    | 8               | 8    | 8    | 8               | 8    | 8    |
|                     | h                                    | 252             | 255  | 259  | 268             | 268  | 274  |
|                     | M                                    | 1xM25 and 1xM32 |      |      | 1xM25 and 1xM32 |      |      |
|                     | M*                                   | 2x25            | 2x25 | 2x25 | 2x25            | 2x25 | 2x25 |
|                     | Max. cable diam. (mm)                | 25              | 25   | 25   | 25              | 25   | 25   |
|                     | Terminal for cond. cross             | 1.5             | 1.5  | 1.5  | 2.5             | 2.5  | 2.5  |
|                     | section (mm <sup>2</sup> ) min.-max. | -4              | -4   | -4   | -10             | -10  | -10  |