

**Cepex enclosure**  
Part no. 4342

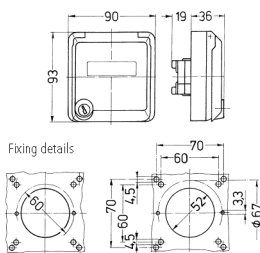


- grey
- as panel mounted receptacle
- for installation of RJ45 data port receptacles
- for BTR type E-DAT module, also suited for LEONI MegaLine
- with labelling field
- 2 keys
- with identical locks: part no + index G

**Technical specifications**

Protection type	IP 44
Shutter	false
Weight	160 g
Declaration of Conformity	EAC

**Drawing**



Drawing  
1 MB 305  
Dim. in mm