

Panel mounted inlet
Part no. 3915

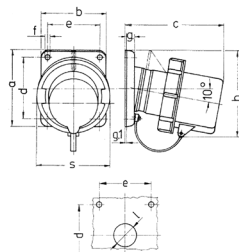


- screw terminals
- highly heat resistant contact carrier
- nickel plated contacts
- with protective cap

Technical specifications

Ampere	32 A
Poles	7 p
Voltage	400 V
Clock position	6 h
Hertz	50-60 Hz
Connection technology	Screw terminals
Contact	nickel plated contacts, highly heat resistant contact carrier
Protection type	IP 67
Weight	436 g
Declaration of Conformity	EAC

Drawing



Drawing	Amp.	16	32
2 MB 203	Poles	7	7
Dim. in mm	a	85	85
	b	85	85
	c	132	137
	d	70	70
	e	70	70
	f	6.3	6.3
	g	11	11
	g.1	2	2
	h	107	111
	s	86	102
	l	30	30
Terminal for cond. cross		1	2.5
section (mm ²) min.-max.		—2.5	—6