

Wall mounted inlet
Part no. 355

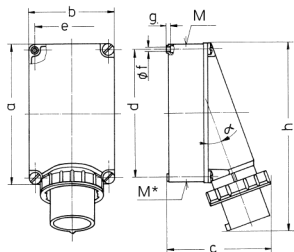


- screw terminals
- for a suitable watertight protective cover see part no. 40434

Technical specifications

Ampere	63 A
Poles	4 p
Voltage	110 V
Clock position	4 h
Hertz	50-60 Hz
Connection technology	Screw terminals
Contact	standard
Protection type	IP 67
Weight	884 g
Declaration of Conformity	EAC, CQC

Drawing



Drawing	Amp.	63			125	
		3	4	5	4	5
2 MB 36	Poles					
Dim. in mm						
a		170	170	170	264	264
b		118	118	118	163	163
c		171	171	171	205	205
d		134.5	134.5	134.5	240	240
e		103	103	103	140	140
f		6,1	6,1	6,1	8,1	8,1
g		6	6	6	8	8
h		250	250	250	355	355
M		40	40	40	50	50
M*		2x40	2x40	2x40	50	50
a		25°	25°	25°	20°	20°
Max. cable diam. (mm)						
		27	27	27	38	38
Terminal for cond. cross section (mm²) min.-max.						
		6	6	6	16	16
		-16	-16	-16	-35	-35