

Receptacle
Part no. 2766A

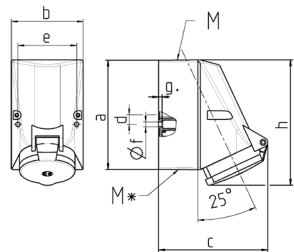


- screw terminals
- internal fixing
- one cable entry at top and two blind entries (can be cut out) at the bottom
- enclosure base can be turned 180°

Technical specifications

| | |
|---------------------------|-----------------|
| Ampere | 16 A |
| Poles | 5 p |
| Voltage | 600-690 V |
| Clock position | 5 h |
| Hertz | 50-60 Hz |
| Connection technology | Screw terminals |
| Contact | standard |
| Protection type | IP 44 |
| Weight | 283 g |
| Declaration of Conformity | EAC, CQC |

Drawing



| Drawing 1 MB 43 | Amp. Poles | 16 | | 32 | | |
|---|---------------|----------------------------|---------|----------------------------|---------|---------|
| | | 4 | 5 | 3 | 4 | 5 |
| Dim. in mm | a | 128 | 128 | 128 | 128 | 128 |
| | b | 84 | 84 | 84 | 84 | 84 |
| | c | 122 | 124 | 136 | 136 | 138 |
| | d | 11 | 11 | 11 | 11 | 11 |
| | e | 68 | 68 | 68 | 68 | 68 |
| | f | 5.3 | 5.3 | 5.3 | 5.3 | 5.3 |
| | g | 4 | 4 | 4 | 4 | 4 |
| | h | 144 | 145 | 158 | 158 | 160 |
| | M | 25 | 25 | 32 | 32 | 32 |
| | M* | 2x25 (blind) to be cut out | | 2x25 (blind) to be cut out | | |
| Max. cable diam. (mm) | | 18 | 18 | 18/25 | 18/25 | 18/25 |
| Terminal for cond. cross section (mm²) min.-max. | | 1.5 1.5 | 1.5 1.5 | 2.5 2.5 | 2.5 2.5 | 2.5 2.5 |
| | | —4 —4 | —4 —4 | —10 —10 | —10 —10 | —10 —10 |