

Panel mounted receptacle TM
Part no. 24842

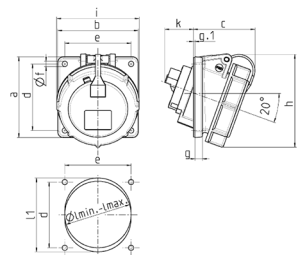


- screw terminals
- **X-CONTACT**
- highly heat resistant contact carrier
- nickel plated contacts
- 20° inclination
- (form BS)

Technical specifications

Ampere	63 A
Poles	5 p
Voltage	440-460 V
Clock position	11 h
Hertz	60 Hz
Connection technology	Screw terminals
Contact	highly heat resistant contact carrier, nickel plated contacts, X-CONTACT®
Protection type	IP 67
Flange	114x114 mm
Fixing hole	90x90 mm
Inclination	20 °
Weight	676 g
Declaration of Conformity	EAC

Drawing



Drawing	Amp.	16		32		63
1 MB 474	Pole	3	5	3/4	5	3/4/5
Dim. in mm	a	85	85	85	85	114
	b	85	85	85	85	114
	c	71	65	65	80	98
	d	70	70	70	70	90
	e	70	70	70	70	90
	f	5.5	5.5	5.5	5.5	5.5
	g	8	8	8	8	12
	g.1	2	2	2	2	2
	h	92	98	101	115	135
	i	70	87	94	101	112
	k	39	33	53	53	70
	l min.	57	70	78	78	92
	l max.	78	78	78	78	105
	lt	—	—	—	—	105
Terminal for cond. cross		1.5	1.5	2.5	2.5	6
section (mm²) min.-max.		—4	—4	—10	—10	—25