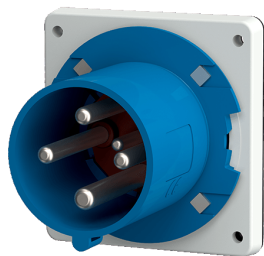


Panel mounted inlet
Part no. 1984

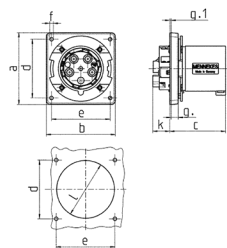


- screw terminals
- highly heat resistant contact carrier
- nickel plated contacts
- a retaining nose to hold the hinged lid of the connector must be provided by the customer in order to ensure satisfactory locking

Technical specifications

Ampere	63 A
Poles	4 p
Voltage	230 V
Clock position	9 h
Hertz	50-60 Hz
Connection technology	Screw terminals
Contact	highly heat resistant contact carrier, nickel plated contacts
Protection type	IP 44
Weight	480 g
Declaration of Conformity	EAC, CQC, VDE (ÜG)

Drawing



Drawing		63		
2 MB 155		Poles		
Dim. in mm		3	4	5
a		110	110	110
b		106	106	106
c		86	86	86
d		90	90	90
e		90	90	90
f		5,5	5,5	5,5
g		12	12	12
g.1		2	2	2
k		28	28	28
l		88,5	88,5	88,5
Terminal for cond. cross		6	6	6
section (mm²) min.-max.		—16	—16	—16