

**Panel mounted receptacle with TwinCONTACT**  
Part no. 1618

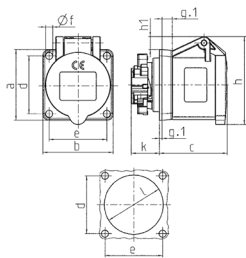


- screwless spring terminals
- suitable for through wiring
- small flange dimensions
- straight

**Technical specifications**

Ampere	16 A
Poles	3 p
Voltage	110 V
Clock position	4 h
Hertz	50-60 Hz
Connection technology	Screwless - TwinCONTACT
Contact	standard
Protection type	IP 44
Flange	55x55 mm
Fixing hole	45x45 mm
Weight	99 g
Declaration of Conformity	EAC

**Drawing**



Drawing	Amp.	16
1 MB 648	Poles	3
Dim. in mm	a	55
	b	55
	c	54
	d	45
	e	45
	f	5,5
	g	8
	g.1	2
	h	70
	h1	12
	k	22
	l	47
Terminal for cond. cross		1,5
section (mm²) min.-max.		—4