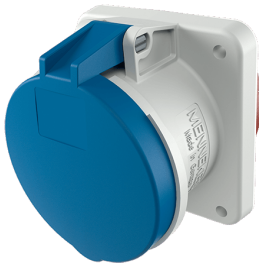


## Panel mounted receptacle

Part no. 1251A

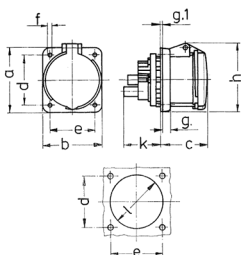


- screw terminals
- **X-CONTACT**
- straight
- products with pilot contact on request

## Technical specifications

|                           |                 |
|---------------------------|-----------------|
| Ampere                    | 63 A            |
| Poles                     | 5 p             |
| Voltage                   | 230 V           |
| Clock position            | 9 h             |
| Hertz                     | 50-60 Hz        |
| Connection technology     | Screw terminals |
| Contact                   | X-CONTACT®      |
| Protection type           | IP 44           |
| Flange                    | 107x100 mm      |
| Fixing hole               | 85x77 mm        |
| Weight                    | 620 g           |
| Declaration of Conformity | VDE, EAC, CQC   |

## Drawing



| Drawing<br>1 MB 211  | Amp.<br>Poles | 63  |     |     |
|--|---------------|-----|-----|-----|
|  |               | 3   | 4   | 5   |
| Dim. in mm   | a             | 107 | 107 | 107 |
|  | b             | 100 | 100 | 100 |
|  | c             | 80  | 80  | 80  |
|  | d             | 85  | 85  | 85  |
|  | e             | 77  | 77  | 77  |
|  | f             | 6   | 6   | 6   |
|  | g.            | 12  | 12  | 12  |
|  | g.1           | 2   | 2   | 2   |
|  | h             | 113 | 113 | 113 |
|  | k             | 55  | 55  | 55  |
|  | l             | 88  | 88  | 88  |
| Terminal for cond. cross<br>section (mm <sup>2</sup> ) min.-max. |               | 6   | 6   | 6   |
|  |               | -25 | -25 | -25 |