

Wall mounted inlet
Part no. 1217

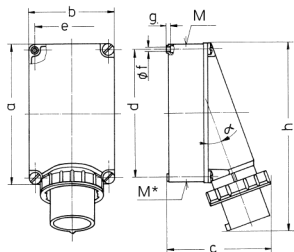


- screw terminals
- for a suitable watertight protective cover see part no. 40434

Technical specifications

| | |
|---------------------------|-----------------|
| Ampere | 63 A |
| Poles | 3 p |
| Voltage | 400 V |
| Clock position | 9 h |
| Hertz | 50-60 Hz |
| Connection technology | Screw terminals |
| Contact | standard |
| Protection type | IP 67 |
| Weight | 820 g |
| Declaration of Conformity | EAC, CQC |

Drawing



| Drawing 2 MB 36 | Amp. Poles | 63 | | | 125 | |
|--|---------------|-------|-------|-------|-----|-----|
| | | 3 | 4 | 5 | 4 | 5 |
| Dim. in mm | | | | | | |
| a | b | 170 | 170 | 170 | 264 | 264 |
| c | d | 118 | 118 | 118 | 163 | 163 |
| e | f | 171 | 171 | 171 | 205 | 205 |
| g | h | 134.5 | 134.5 | 134.5 | 240 | 240 |
| i | j | 103 | 103 | 103 | 140 | 140 |
| k | l | 6,1 | 6,1 | 6,1 | 8,1 | 8,1 |
| m | n | 6 | 6 | 6 | 8 | 8 |
| o | p | 250 | 250 | 250 | 355 | 355 |
| q | r | 40 | 40 | 40 | 50 | 50 |
| s | t | 2x40 | 2x40 | 2x40 | 50 | 50 |
| u | v | 25° | 25° | 25° | 20° | 20° |
| Max. cable diam. (mm) | | | | | | |
| | | 27 | 27 | 27 | 38 | 38 |
| Terminal for cond. cross section (mm²) min.-max. | | | | | | |
| | | 6 | 6 | 6 | 16 | 16 |
| | | -16 | -16 | -16 | -35 | -35 |