

Grounding-type panel mounted receptacle

Part no. 11110

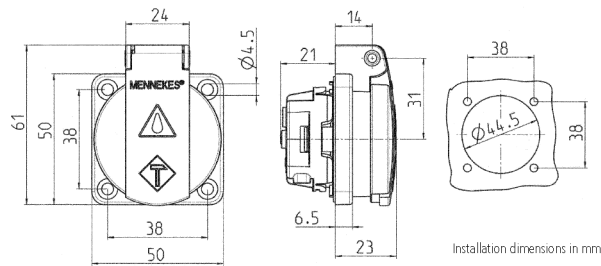


- French-belgian standard
- with hinged lid
- 3 plug-in terminals as connecting terminals for 1.5 - 2.5 mm²
- other colours on request

Technical specifications

Ampere	16 A
Poles	2 p+E
Voltage	230 V
Connection technology	Plug-in terminals
Contact	standard
Protection type	IP 44
Shutter	false
Flange	50x50 mm
Fixing hole	38x38 mm
Weight	40 g

Drawing



Drawing
1 MB 410
Dim. in mm