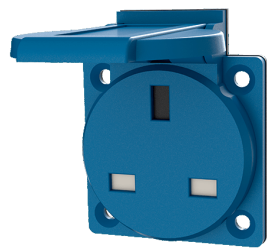


**Grounding-type panel mounted receptacle**  
Part no. 10718

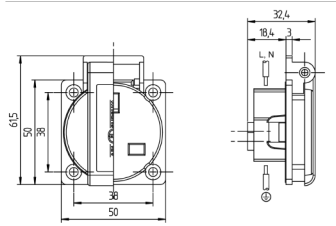


- British standard
- with hinged lid
- 3 screw terminals
- with seal
- receptacle cannot be combined with enclosure base part no. 10714, 10715 or 10716

**Technical specifications**

Ampere	13 A
Poles	3 p
Voltage	230 V
Connection technology	Screw terminals
Contact	standard
Protection type	IP 44
Shutter	true
Flange	50x50 mm
Fixing hole	38x38 mm
Weight	20 g
Declaration of Conformity	EAC

**Drawing**



Drawing  
1 MB 584  
Dim. in mm