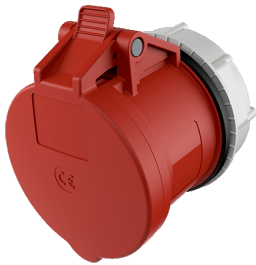


Panel mounted receptacle RAPIDO® with TwinCONTACT

Part no. 989

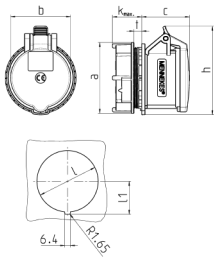


- screwless spring terminals
- suitable for through wiring
- for wall apertures 70 mm diameter
- central fixing

Technical specifications

| | |
|---------------------------|-------------------|
| Ampere | 32 A |
| Poles | 5 p |
| Voltage | 400 V |
| Clock position | 6 h |
| Hertz | 50-60 Hz |
| Connection technology | Plug-in terminals |
| Contact | standard |
| Protection type | IP 44 |
| Weight | 260 g |
| Declaration of Conformity | VDE, EAC |

Drawing



| Drawing 1 MB 468 | Amp. Poles | 16 | | 32 | | |
|--------------------------------------|---------------|-----------------|-------|-------------------------|-------|-------|
| | | 4 | 5 | 3 | 4 | 5 |
| Dim. in mm | a | 81 | 81 | 81 | 81 | 81 |
| | b | 66 | 69 | 71 | 71 | 80 |
| | c | 58 | 55 | 66 | 66 | 64 |
| | k | max. 33 max. 33 | | max. 33 max. 33 max. 33 | | |
| | h | 100 | 102 | 101 | 101 | 108 |
| | l | 70 | 70 | 70 | 70 | 70 |
| | l1 | 37.75 | 37.75 | 37.75 | 37.75 | 37.75 |
| | t | 2.9 | 2.9 | 2.9 | 2.9 | 2.9 |
| Terminal for cond. cross | | 1.5 | 1.5 | 2.5 | 2.5 | 2.5 |
| section (mm ²) min.-max. | | —4 | —4 | —6 | —6 | —6 |