

Panel mounted receptacle
Part no. 808A

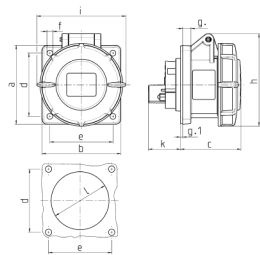


- screw terminals
- straight

Technical specifications

Ampere	32 A
Poles	3 p
Voltage	Isolating transformer
Clock position	12 h
Connection technology	Screw terminals
Contact	standard
Protection type	IP 67
Flange	85x75 mm
Fixing hole	60x60 mm
Weight	236 g
Declaration of Conformity	VDE, EAC, CQC

Drawing



Drawing 1 MB 141	Amp. Poles	16			32		
		3	4	5	3	4	5
Dim. in mm	a	75	75	75	85	85	85
	b	75	75	75	75	75	75
	c	60	61	61	70	70	72
	d	60	60	60	60	60	60
	e	60	60	60	60	60	60
	f	5.5	5.5	5.5	5.5	5.5	5.5
	g	8	8	8	8	8	8
	g.1	2	2	2	2	2	2
	h	83	88	95	99	99	105
	i	78	85	96	103	103	110
	k	31	32	32	39	39	39
	l	43	52	54	58	58	65
	Terminal for cond. cross section (mm²) min.-max.	1.5 1.5 1.5	2.5 2.5 2.5	2.5 2.5 2.5	—4 —4 —4	—10 —10 —10	—10 —10 —10