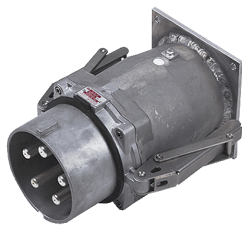


Panel mounted inlet
Part no. 75291



- screw terminals
- seawater resistant products are available on request

Technical specifications

Ampere	400 A
Poles	4 p
Voltage	400 V
Clock position	6 h
Hertz	50-60 Hz
Connection technology	Screw terminals
Contact	standard
Protection type	IP 67
Weight	7695 g
Declaration of Conformity	EAC

Drawing

