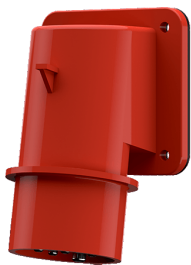


**Panel mounted inlet**  
Part no. 750



- screw terminals
- highly heat resistant contact carrier
- nickel plated contacts

**Technical specifications**

Ampere	16 A
Poles	7 p
Voltage	400 V
Clock position	6 h
Hertz	50-60 Hz
Connection technology	Screw terminals
Contact	nickel plated contacts, highly heat resistant contact carrier
Protection type	IP 44
Weight	204 g
Declaration of Conformity	EAC, CQC

**Drawing**

