

Flush mounted installation box

Part no. 41404

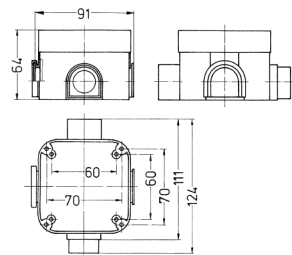


- for Cepex CEE receptacles 16 A and 32 A and Cepex receptacles SCHUKO®
- can be combined with all Cepex panel mounted receptacles

Technical specifications

Weight	93 g
Declaration of Conformity	EAC

Drawing



Drawing  
1 MB 334  
Dim. in mm