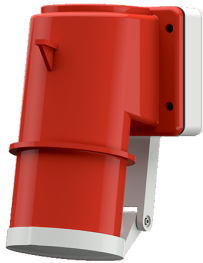


Panel mounted inlet

Part no. 400

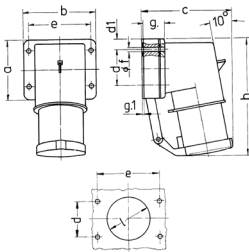


- screw terminals with hinged lid

Technical specifications

Ampere	16 A
Poles	5 p
Voltage	400 V
Clock position	6 h
Hertz	50-60 Hz
Connection technology	Screw terminals
Contact	standard
Protection type	IP 44
Weight	275 g
Declaration of Conformity	VDE, EAC, CQC

Drawing



Drawing	Amp.	16		32				
		Poles		4	5	3	4	5
2 MB 43								
Dim. in mm	a	85	85	75	75	75		
	b	85	85	90	90	90		
	c	104	106	115	115	117		
	d	64	64	45	45	45		
	d1	10	10	13	13	13		
	e	64	64	78	78	78		
	f	5.5	5.5	5.5	5.5	5.5		
	g	27	27	27	27	27		
	g.1	2	2	1	1	1		
	h	140	140	150	150	150		
	l	50	50	55	55	55		
Terminal for cond. cross section (mm ²) min.-max.		1	1	2.5	2.5	2.5		
		-2.5	-2.5	-6	-6	-6		