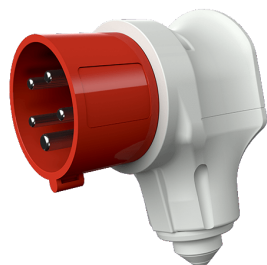


Angled plug VarioTOP
Part no. 3982



- screw terminals
- nickel plated contacts
- cable entry hood rotating up to 60° to the left or the right
- with grommet
- cable entry hood in electric grey
- especially suited for use with receptacles of the Cepex range

Technical specifications

Ampere	16 A
Poles	5 p
Voltage	400 V
Clock position	6 h
Hertz	50-60 Hz
Connection technology	Screw terminals
Contact	nickel plated contacts
Protection type	IP 44
Weight	185 g
Declaration of Conformity	VDE, EAC, CQC

Drawing

