

Wall mounted inlet
Part no. 360

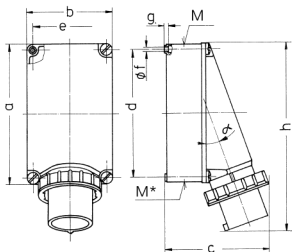


- screw terminals
- for a suitable watertight protective cover see part no. 40434

Technical specifications

| | |
|---------------------------|-----------------|
| Ampere | 63 A |
| Poles | 5 p |
| Voltage | 230 V |
| Clock position | 9 h |
| Hertz | 50-60 Hz |
| Connection technology | Screw terminals |
| Contact | standard |
| Protection type | IP 67 |
| Weight | 931 g |
| Declaration of Conformity | VDE, EAC, CQC |

Drawing



| Drawing | Amp. | 63 | | | 125 | |
|--|-------|-------|-------|-------|-----|-----|
| | | 3 | 4 | 5 | 4 | 5 |
| 2 MB 36 | Poles | | | | | |
| Dim. in mm | | | | | | |
| a | | 170 | 170 | 170 | 264 | 264 |
| b | | 118 | 118 | 118 | 163 | 163 |
| c | | 171 | 171 | 171 | 205 | 205 |
| d | | 134.5 | 134.5 | 134.5 | 240 | 240 |
| e | | 103 | 103 | 103 | 140 | 140 |
| f | | 6,1 | 6,1 | 6,1 | 8,1 | 8,1 |
| g | | 6 | 6 | 6 | 8 | 8 |
| h | | 250 | 250 | 250 | 355 | 355 |
| M | | 40 | 40 | 40 | 50 | 50 |
| M* | | 2x40 | 2x40 | 2x40 | 50 | 50 |
| a | | 25° | 25° | 25° | 20° | 20° |
| Max. cable diam. (mm) | | | | | | |
| | | 27 | 27 | 27 | 38 | 38 |
| Terminal for cond. cross section (mm²) min.-max. | | | | | | |
| | | 6 | 6 | 6 | 16 | 16 |
| | | -16 | -16 | -16 | -35 | -35 |