

Panel mounted receptacle  
Part no. 2997A

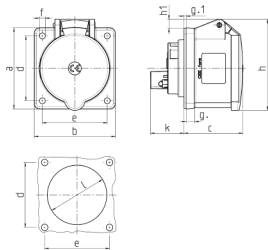


- screw terminals
- straight

Technical specifications

Ampere	32 A
Poles	5 p
Voltage	50-500 V
Clock position	1 h
Connection technology	Screw terminals
Contact	standard
Protection type	IP 44
Flange	75x75 mm
Fixing hole	60x60 mm
Weight	145 g
Declaration of Conformity	VDE, EAC, CQC

Drawing



Drawing 1 MB 247	Amp. Poles	16			32		
		3	4	5	3	4	5
Dim. in mm							
a		75	75	75	75	75	75
b		75	75	75	75	75	75
c		53	53	55	64	64	65
d		60	60	60	60	60	60
e		60	60	60	60	60	60
f		5.5	5.5	5.5	5.5	5.5	5.5
g		8	8	8	8	8	8
g.1		2	2	2	2	2	2
h		75	80	83	89	89	100
h1			6	8	11	11	12
k		31	32	32	39	39	39
l		43	52	54	58	58	62
Terminal for cond. cross		1.5	1.5	1.5	2.5	2.5	2.5
section (mm <sup>2</sup> ) min.-max.		—4	—4	—4	—10	—10	—10