

**Panel mounted inlet**  
Part no. 2692

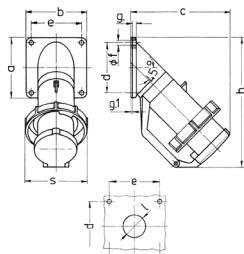


- screw terminals
- high heat resistant contact carrier
- nickel plated contacts
- with hinged lid

**Technical specifications**

Ampere	32 A
Poles	4 p
Voltage	400-440 V
Clock position	3 h
Hertz	50-60 Hz
Connection technology	Screw terminals
Contact	nickel plated contacts, highly heat resistant contact carrier
Protection type	IP 67
Weight	354 g
Declaration of Conformity	VDE, EAC

**Drawing**



Drawing 2 MB 40	Amp. Poles	16		32			63			
		5	3	4	5	4	5	4	5	
Dim. in mm										
a	b	85	85	85	85	85	114	114	114	114
b	a	85	85	85	85	85	114	114	114	114
c	d	141	141	141	144	144	180	180	180	180
d	c	70	70	70	70	70	90	90	90	90
e	f	70	70	70	70	70	90	90	90	90
f	e	6.2	6.2	6.2	6.2	6.2	6.2	6.2	6.2	6.2
g	h	6	6	6	6	6	6	6	6	6
g.1	h.1	2	2	2	2	2	2	2	2	2
h	g	181	181	181	188	188	242	242	242	242
s	l	86	93	93	100	100	113	113	113	113
l	s	30	30	30	30	30	40	40	40	40
Terminal for cond. cross section (mm²) min.-max.		1	2.5	2.5	2.5	4	4	4	4	4
		—2.5	—6	—6	—6	—16	—16	—16	—16	—16