

Panel mounted receptacle TM
Part no. 24740

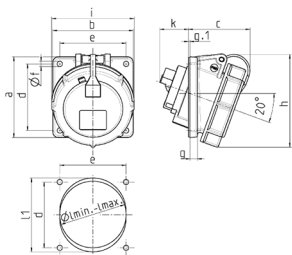


- screw terminals
- highly heat resistant contact carrier
- nickel plated contacts
- 20° inclination
- (form BS)

Technical specifications

Ampere	32 A
Poles	5 p
Voltage	400 V
Clock position	6 h
Hertz	50-60 Hz
Connection technology	Screw terminals
Contact	highly heat resistant contact carrier, nickel plated contacts
Protection type	IP 67
Flange	85x85 mm
Fixing hole	70x70 mm
Inclination	20 °
Weight	340 g
Declaration of Conformity	EAC

Drawing



Drawing 1 MB 474	Amp.	16		32		63
	Pole	3	5	3/4	5	3/4/5
Dim. in mm						
a	85	85	85	85	114	
b	85	85	85	85	114	
c	71	65	65	80	98	
d	70	70	70	70	90	
e	70	70	70	70	90	
f	5.5	5.5	5.5	5.5	5.5	
g	8	8	8	8	12	
g.1	2	2	2	2	2	
h	92	98	101	115	135	
i	70	87	94	101	112	
k	39	33	53	53	70	
I min.	57	70	78	78	92	
I max.	78	78	78	78	105	
It	—	—	—	—	105	
Terminal for cond. cross	1.5	1.5	2.5	2.5	6	
section (mm²) min.-max.	—4	—4	—10	—10	—25	