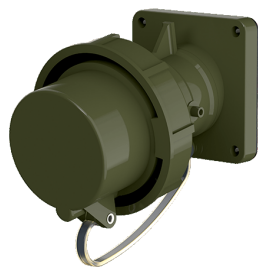


Panel mounted inlet TM
Part no. 20463

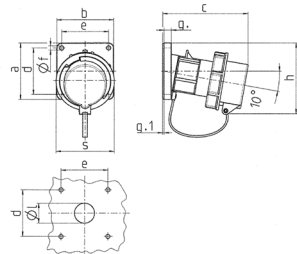


- screw terminals
- highly heat resistant contact carrier
- nickel plated contacts
- with protective cap
- (form BP)

Technical specifications

Ampere	63 A
Poles	5 p
Voltage	400 V
Clock position	6 h
Hertz	50-60 Hz
Connection technology	Screw terminals
Contact	standard
Protection type	IP 67
Weight	721 g
Declaration of Conformity	VDE, EAC

Drawing



Drawing	Amp.	16			32			63		
2 MB 62	Poles	3	5		3	4	5	3	4	5
Dim. in mm	a	85	85	85	85	85	85	108	108	108
	b	85	85	85	85	85	85	101	101	101
	c	132	132	131	131	137	137	164	164	164
	d	70	70	70	70	70	70	85	85	85
	e	70	70	70	70	70	70	77	77	77
	f	6.3	6.3	6.3	6.3	6.3	6.3	6.5	6.5	6.5
	g	11	11	11	11	11	11	12	12	12
	g.1	2	2	2	2	2	2	2	2	2
	h	100	107	108	108	111	111	130	130	130
	s	70	87	94	94	102	102	114	114	114
	l	30	30	30	30	30	30	40	40	40
Terminal for cond. cross	1	1	2,5	2,5	2,5	2,5	2,5	6	6	6
section (mm²) min.-max.		—2.5	—2.5	—6	—6	—6	—6	—16	—16	—16