

## Flush mounted enclosure

Part no. 18427

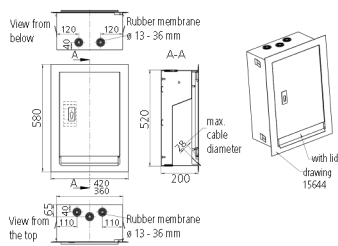


- dimensions (H x W x D): 520 x 360 x 200 mm
- with front door and trim frame
- from flat finished stainless steel
- dimensions (H x W): 580 x 420 mm

## Technical specifications

Weight	13250 g
Declaration of Conformity	EAC

## Drawing



Drawing  
1 MB 430  
Dim. in mm