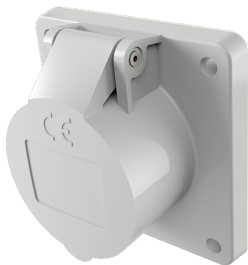


Panel mounted receptacle
Part no. 1603

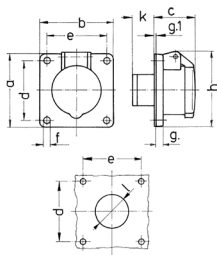


- screw terminals
- straight
- also suitable for cable ducts and flush mounted installation boxes

Technical specifications

Ampere	16 A
Poles	2 p
Voltage	40-50 V
Clock position	12 h
Hertz	50-60 Hz
Connection technology	Screw terminals
Contact	standard
Protection type	IP 44
Flange	75x75 mm
Fixing hole	60x60 mm
Weight	126 g
Declaration of Conformity	EAC, CQC

Drawing



Drawing 1 MB 292	Amp. Poles	16		32	
		2	3	2	3
Dim. in mm	a	75	75	75	75
	b	75	75	75	75
	c	44	44	44	44
	d	60	60	60	60
	e	60	60	60	60
	f	5.5	5.5	5.5	5.5
	g.	8	8	8	8
	g.1	2	2	2	2
	h	77	77	77	77
	k	22	22	22	22
	l	34	34	34	34
	Terminal for cond. cross section (mm ²) min.-max.	4	4	4	4
		—10	—10	—10	—10