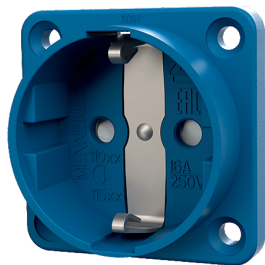


**Panel mounted receptacle SCHUKO®**  
Part no. 11581

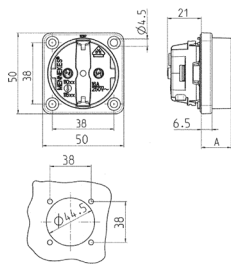


- without hinged lid
- 3 screw terminals as connecting terminals for 1.5 – 2.5 mm<sup>2</sup>
- other colours on request

Technical specifications

Ampere	16 A
Poles	2 p+E
Voltage	230 V
Connection technology	Screw terminals
Contact	standard
Protection type	IP 20
Shutter	true
Flange	50x50 mm
Fixing hole	38x38 mm
Weight	40 g
Declaration of Conformity	VDE, EAC, Kema

Drawing



Drawing 1 MB 450 Dim. in mm	Dim. A
SCHUKO	18.3
French/Belgian standards	15.8
Danish standards	15.8