

**Power post**  
Part no. 84335



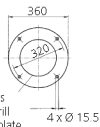
- from steel tube
- wall thickness 4.0 mm
- hot-dip galvanised
- powder-coated
- colour: red
- hinged supply aperture with safety lock
- dimensions (H x Ø): 1050 x 220 mm (inside)
- weight: approx. 45 kg
- aperture at bottom: (H x W) 50 x 40 mm
- fixing flange: Ø 360 mm
- with 4 fixing holes 15.5 mm
- for fixing to an existing fundament

**Technical specifications**

|                           |  |
|---------------------------|--|
| CEE 16 A, 5 p, 400 V      | 1  |
| SCHUKO® 16 A, 230 V       | 2  |
| Fusing                    | <ul style="list-style-type: none"> <li>• 1 MCB 16 A, 3 p, C</li> <li>• 1 MCB 16 A, 1 p, B</li> </ul> |
| Connection / feeder cable | <ul style="list-style-type: none"> <li>• for 1 cable up to 5 x 6 mm<sup>2</sup></li> </ul>           |
| Protection type           | IP 44  |
| Shutter                   | false  |
| Enclosure material        | Metal  |
| Weight                    | 42000 g  |
| Height                    | 1050 mm  |
| Diameter                  | 220 mm   |

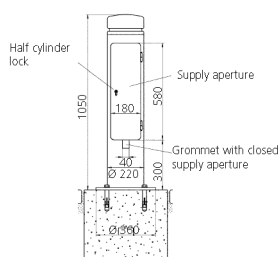
**Drawing**

Top view of the bottom plate



The supply aperture is located between 2 drill holes in the bottom plate

Part no. 18500RO  
Colour: red RAL 3005



Drawing  
1 MB 443

Dim. in mm