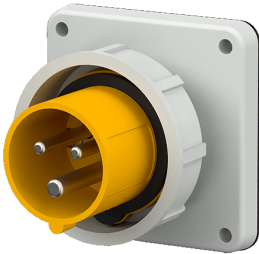


Panel mounted inlet

Part no. 825



- screw terminals
- nickel plated contacts
- a retaining nose to hold the hinged lid of the connector must be provided by the customer in order to ensure satisfactory locking

Technical specifications

Ampere	16 A
Poles	3 p
Voltage	110 V
Clock position	4 h
Hertz	50-60 Hz
Connection technology	Screw terminals
Contact	nickel plated contacts
Protection type	IP 67
Weight	170 g
Declaration of Conformity	CN,CQC, DE,VDE (ÜG)

Drawing



Drawing	Amp.	16			32		
		Poles			Poles		
2 MB 187/2		3	4	5	3	4	5
Dim. in mm							
a		85.7	85.7	85.7	85.7	85.7	85.7
b		85.7	85.7	85.7	85.7	85.7	85.7
c		72	72	72	90	90	90
d		69.5	69.5	69.5	69.5	69.5	69.5
e		69.5	69.5	69.5	69.5	69.5	69.5
f		5.5	5.5	5.5	5.5	5.5	5.5
g.		11	11	11	11	11	11
g.1		2	2	2	2	2	2
l		32	36	47	47	47	47
s		71	79	89	94	94	102
Terminal for cond. cross section (mm ²) min.-max.		1.5	1.5	1.5	2.5	2.5	2.5
		-4	-4	-4	-10	-10	-10