

Wall mounted receptacle

Part no. 7243

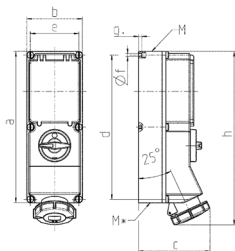


- screw terminals
- X-CONTACT®
- switched
- mechanical DUO-interlock
- circuit breaker, K-characteristics
- receptacles can be padlocked

Technical specifications

Ampere	63 A
Poles	4 p
Voltage	400 V
Clock position	6 h
Hertz	50-60 Hz
Connection technology	Screw terminals
Contact	X-CONTACT®
Protection type	IP 67
Enclosure material	Plastic
Weight	4298 g
Declaration of Conformity	CN,CQC

Drawing



Drawing	Amp.	16			32		63	
		1 MB 181/620 Poles						
Dim. in mm		3	4	5	4	5	4	5
a		364	364	364	364	364	460	460
b		134	134	134	134	134	180	180
c		160	162	163	168	168	202	202
d		347	347	347	347	347	440	440
e		117	117	117	117	117	160	160
f		6.3	6.3	6.3	6.3	6.3	8.1	8.1
g		8	8	8	8	8	8	8
h		391	395	398	408	411	505	505
M		32/40	32/40	32/40	32/40	32/40	40	40
M*		2x32	2x32	2x32	2x32	2x32	2x40	2x40
Max. cable diam. (mm)		27	27	27	27	27	27	27
Terminal for cond. cross section (mm ²) min.-max.		1.5	1.5	1.5	2.5	2.5	6	6
		-4	-4	-4	-10	-10	-25	-25