

**Connector**  
Part no. 690A

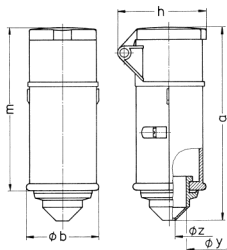


- screw terminals
- with grommet

**Technical specifications**

Ampere	16 A
Poles	3 p
Voltage	20-25, 40-50 V
Clock position	4 h
Hertz	100-200 Hz
Connection technology	Screw terminals
Contact	standard
Protection type	IP 44
Weight	205 g
Declaration of Conformity	CN,CQC

**Drawing**



Drawing 3 MB 37	Amp. Poles	16		32	
		2	3	2	3
Dim. in mm	a	144	144	144	144
	b	55	55	55	55
	h	67	67	67	67
	m	122	122	122	122
	y	25	25	25	25
	z	9	9	9	9
Terminal for cond. cross section (mm <sup>2</sup> ) min.-max.		4	4	4	4
		-10	-10	-10	-10