

Wall mounted receptacle

Part no. 5946A

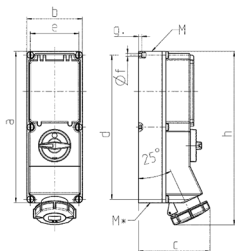


- screw terminals
- highly heat resistant contact carrier
- nickel plated contacts
- switched
- mechanical DUO-interlock
- DIN rail
- receptacles can be padlocked

Technical specifications

| | |
|---------------------------|---|
| Ampere | 32 A |
| Poles | 4 p |
| Voltage | 400-440 V |
| Clock position | 3 h |
| Hertz | 50-60 Hz |
| Connection technology | Screw terminals |
| Contact | nickel plated contacts, highly heat resistant contact carrier |
| Protection type | IP 67 |
| Enclosure material | Plastic |
| Weight | 2102 g |
| Declaration of Conformity | CN,CQC |

Drawing



| Drawing 1 MB 181 | Amp. Poles | 16 | | | 32 | |
|---------------------|---|-------|-------|-------|-------|-------|
| | | 3 | 4 | 5 | 4 | 5 |
| Dim. in mm | a | 364 | 364 | 364 | 364 | 364 |
| | b | 134 | 134 | 134 | 134 | 134 |
| | c | 160 | 162 | 163 | 168 | 168 |
| | d | 347 | 347 | 347 | 347 | 347 |
| | e | 117 | 117 | 117 | 117 | 117 |
| | f | 6.3 | 6.3 | 6.3 | 6.3 | 6.3 |
| | g | 8 | 8 | 8 | 8 | 8 |
| | h | 391 | 395 | 398 | 408 | 411 |
| | M | 32/40 | 32/40 | 32/40 | 32/40 | 32/40 |
| | M* | 2x32 | 2x32 | 2x32 | 2x32 | 2x32 |
| | Max. cable diam. (mm) | 27 | 27 | 27 | 27 | 27 |
| | Terminal for cond. cross section (mm ²) min.-max. | 1.5 | 1.5 | 1.5 | 2.5 | 2.5 |
| | | -4 | -4 | -4 | -10 | -10 |