

**Panel mounted receptacle**  
Part no. 2488A

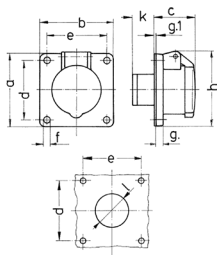


- screw terminals
- straight
- also suitable for cable ducts and flush mounted installation boxes

**Technical specifications**

Ampere	32 A
Poles	2 p
Voltage	50 V
Clock position	10 h
Connection technology	Screw terminals
Contact	standard
Protection type	IP 44
Flange	75x75 mm
Fixing hole	60x60 mm
Weight	116 g
Declaration of Conformity	CN,CQC

**Drawing**



Drawing 1 MB 292	Amp. Poles	16		32	
		2	3	2	3
Dim. in mm	a	75	75	75	75
	b	75	75	75	75
	c	44	44	44	44
	d	60	60	60	60
	e	60	60	60	60
	f	5.5	5.5	5.5	5.5
	g	8	8	8	8
	g.1	2	2	2	2
	h	77	77	77	77
	k	22	22	22	22
	l	34	34	34	34
Terminal for cond. cross section (mm²) min.-max.		4 4	4 4	4 4	4 4
		—10 —10	—10 —10	—10 —10	—10 —10