

Panel mounted receptacle TM
Part no. 24841

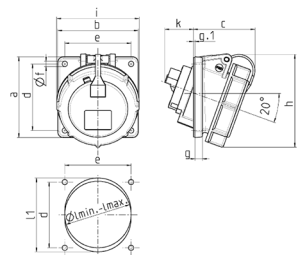


- screw terminals
- X-CONTACT®
- highly heat resistant contact carrier
- nickel plated contacts
- 20° inclination
- (form BS)

Technical specifications

Ampere	63 A
Poles	5 p
Voltage	230 V
Clock position	9 h
Hertz	50-60 Hz
Connection technology	Screw terminals
Contact	highly heat resistant contact carrier, nickel plated contacts, X-CONTACT®
Protection type	IP 67
Flange	114x114 mm
Fixing hole	90x90 mm
Inclination	20 °
Weight	675 g

Drawing



Drawing 1 MB 474 Dim. in mm	Amp. Pole	16		32		63
		3	5	3/4	5	3/4/5
a		85	85	85	85	114
b		85	85	85	85	114
c		71	65	65	80	98
d		70	70	70	70	90
e		70	70	70	70	90
f		5.5	5.5	5.5	5.5	5.5
g		8	8	8	8	12
g.1		2	2	2	2	2
h		92	98	101	115	135
i		70	87	94	101	112
k		39	33	53	53	70
I min.		57	70	78	78	92
I max.		78	78	78	78	105
It		—	—	—	—	105
Terminal for cond. cross		1.5	1.5	2.5	2.5	6
section (mm²) min.-max.		—4	—4	—10	—10	—25