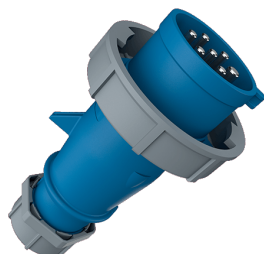


**Plug AM-TOP®**  
Part no. 2405

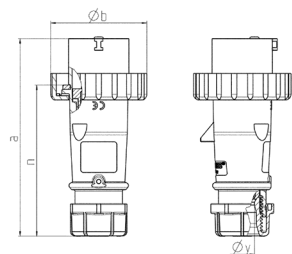


- screw terminals
- highly heat resistant contact carrier
- nickel plated contacts
- single part body
- cable gland and sealing
- strain relief and protection against kinking

Technical specifications

Ampere	32 A
Poles	7 p
Voltage	230 V
Clock position	9 h
Hertz	50-60 Hz
Connection technology	Screw terminals
Contact	nickel plated contacts, highly heat resistant contact carrier
Protection type	IP 67
Weight	349 g
Declaration of Conformity	CN,CQC

Drawing



Drawing		16		32
2 MB 218	Amp. Poles	7		7
Dim. in mm	a	147		180
	b	87		101
	n	114		138
	y	16		22
Terminal for cond. cross		1		2.5
section (mm²) min.-max.		—2.5		—6