

Wall mounted receptacle  
Part no. 2840A

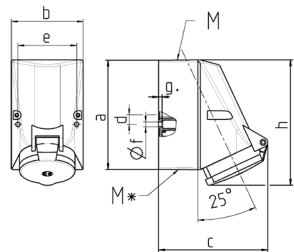


- screw terminals
- internal fixing
- one cable entry at top and one blind entry (can be cut out) at the bottom
- enclosure base can be turned 180°

Technical specifications

Ampere	16 A
Poles	5 p
Voltage	50-500 V
Clock position	1 h
Connection technology	Screw terminals
Contact	standard
Protection type	IP 44
Weight	333 g
Declaration of Conformity	CN,CQC

Drawing



Drawing 1 MB 43	Amp. Poles	16		32		
		4	5	3	4	5
Dim. in mm	a	128	128	128	128	128
	b	84	84	84	84	84
	c	122	124	136	136	138
	d	11	11	11	11	11
	e	68	68	68	68	68
	f	5.3	5.3	5.3	5.3	5.3
	g	4	4	4	4	4
	h	144	145	158	158	160
	M	25	25	32	32	32
	M*	2x25 (blind) to be cut out		2x25 (blind) to be cut out		
Max. cable diam. (mm)		18	18	18/25	18/25	18/25
Terminal for cond. cross section (mm²) min.-max.		1.5 1.5	1.5 1.5	2.5 2.5	2.5 2.5	2.5 2.5
		—4 —4	—4 —4	—10 —10	—10 —10	—10 —10