

# POWER YOUR EVENT

SOLUTIONS FOR EVENTS, TRADE FAIRS, EXHIBITION AND CONFERENCE CENTERS

 **MENNEKES**

MY POWER CONNECTION



 You can find more information on our website

## House lights down – stage lights on ...

... let the show begin. Every successful event succeeds or fails with a reliable, effectively distributed energy supply. With MENNEKES, as trade fair company, hall operator or event organizer, you ensure energy distribution in professional quality!

As a specialist for industrial plugs and sockets we not only supply the most energy-intensive industries with distribution solutions, we also connect energy, data network technology, and components for modern building control technology for the establishment and extension of an intelligent infrastructure. Because today's exhibition centers and conference centers are no longer purely functional buildings, but rather are characterized simultaneously by modern architecture and design, we also set standards in the product design of energy distributors.

With our competence in the area of trade fairs and events, we are the right partner for development, production, and planning of individually-optimized energy distribution for events of all types. We advise trade fair companies, stand builders and event organizers, and we are a professional supplier to modern trade fair grounds, multi-functional conference centers, as well as cultural events and sporting events around the world. More energy for your event ...

**... with MENNEKES.**



## Contents



Stationary applications



Mobile applications



Event technology



References



We are MENNEKES

## We make trade fair halls the stage for the greatest productions

### Stationary applications.

Whether trade fair grounds, conference center or event stage – wherever information, presentation or entertainment will be staged for many people, the demand for operationally reliable and robustly configured energy distribution is imperative. Trade fair halls and conference halls are virtually inconceivable „unplugged“.

The permanently installed energy supply points within an event area are the basis of an uninterrupted energy supply. Access to this energy supply, as a rule should only be possible for authorized persons, to prevent impermissible power withdrawals, for example. In addition to power supply, stationary solutions for trade fair halls and conference halls must also provide water distribution and network distribution. Since heavy equipment is used at times in the set-up phases, all permanent installations must be designed to be extremely robust and impact-resistant.

Energy distribution in the outdoor area, for example at trade fair grounds, and event grounds must be protected against weather influences, and it must be possible to authorize access to power, water, and the data network. We offer the right solution for every requirement.

For many years MENNEKES plugs and sockets have been performing reliably indoors and outdoors, for example in the outdoor area of Messe Frankfurt, at Landesmesse Stuttgart, for the MCH Group, Exhibition and Congress Center Basel, or at the WDR or ZDF broadcasting institutes.



## We make trade fair halls the stage for the greatest productions

### Stationary applications.

1

#### Flush-mounted combinations for power and water connection

- Modern design
- Energy and water available on-site
- Integration in the building architecture
- lockable even when plugs are connected



2

#### AMAXX receptacle combinations

- Can be also fitted with data port sockets to individual options
- Colour variants yellow, silver, light grey, or black
- Easy set-up and extension through modularity
- sealable – fuses (RCD/MCB) central on-site



Here you can find our AMAXX product video



## We make trade fair halls the stage for the greatest productions

### Stationary applications.

3

#### CombiTOWER

- For indoors and outdoors (protection against weather influences and external effects)
- Robust enclosure
- Available as a closed/lockable enclosure and open
- Available in the colours yellow or silver



Here you can find our AMAXX product video



You can find more information on our website

## Stationary applications - indoor area

### Hall distribution of power, water, and data network.

The proverbial lifeline of an event area is the uninterrupted energy supply. The success of a trade fair or event succeeds or fails with the energy supply. MENNEKES offers individually-tailored solutions for the establishment of a future-capable energy structure. We work out solutions together with our customers. For example, AMAXX enclosures offer the possibility of accommodating network components for the extension or for set-up of small networks. We offer an energy measurement system for the monitoring of energy consumption at trade fairs or events.

The options of combining power and water connections in the form of a wall-mount and flush-mount solution, or as a freestanding solution offer versatile implementation possibilities. For example, as a flush-mount solution in stainless steel that is as robust as it is elegant.

” MENNEKES offers individually-tailored solutions for future energy infrastructure!



AMAXX receptacle combinations



Flush-mounted combinations for power and water connection

## Stationary applications - outdoor area

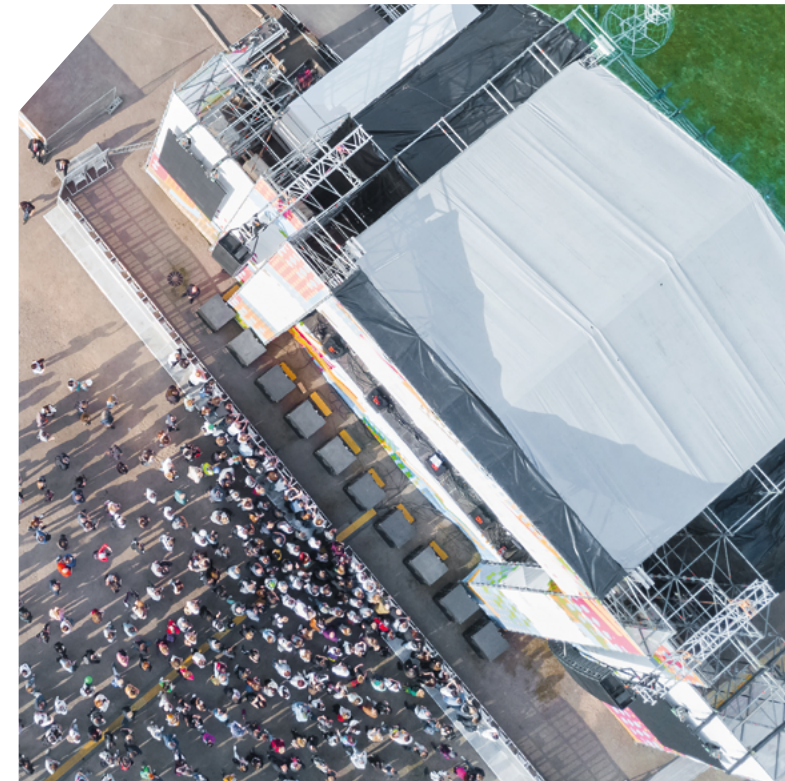
### Free-standing installation.

Likewise, outdoor areas of trade fair grounds or event halls, must also be supplied with energy, as often these areas are used as additional event space in the same manner that the halls themselves are used for events. To realize the required infrastructure in these areas uses permanent installation solutions that are configured for the special requirements imposed on outdoor use are important.

Protection against weather influences, safeguarding against unauthorized access and vandalism, as well as safe and simple handling by many different and in some cases external technicians, are the top priority aspects that must be in place.

In this area MENNEKES offers a broad portfolio of products that meet the requirements demanded by all of these aspects.

Free-standing solutions are frequently required on spacious trade fair grounds. Here lockable energy posts or pillars in a solid stainless steel enclosure from MENNEKES are the optimal choice.





## Stationary applications - outdoor area

### Free-standing installation.

1

#### Lockable power posts

- lockable even when plugs are connected
- Protection against weather influences
- Protection against unauthorized access
- Available in different RAL colours



2

#### Stainless steel distributors

- Protection against weather influences
- Modern design
- Fusing on-site
- Protected against unauthorized access



## Stationary applications - outdoor area

### Safeguarded solutions for mounting on walls and poles.



For public buildings, such as trade fair halls, conference halls, and event halls, planners and installers of building technology are particularly called upon to comply with strict regulations and requirements imposed on the building installation. We develop custom solutions on request, for example in halogenfree design and in accordance with DIN EN 61439 for use in public buildings.

With the AMELAN enclosure material we have products with high mechanical, thermal and electrical properties that optimally combine high chemical resistance and dimensional stability.

In addition, MENNEKES receptacle combinations can be easily, quickly and securely protected from external effects, wind and weather, and UV radiation with suitable weather protection roofs made of high-quality stainless steel. With the accessories available from MENNEKES even fastening on lamp-posts is no problem.

MENNEKES EverGUM receptacle combinations are ideally suited for outdoor use. The enclosure is made of a solid rubber mixture, has high resistance to disruptive current and tracking, and is available in the colours yellow or black.

## Stationary applications - outdoor area

### Safeguarded solutions for mounting on walls and poles.

1

#### AMELAN enclosure material

- Combines high mechanical, thermal and electrical properties with outstanding chemical resistance, as well as dimensional stability
- Available in IP44 and IP67
- Colour variants – black, yellow, silver and light grey
- Halogen-free design as needed
- Available with fire protection classification in accordance with DIN EN 13501-1:2010



2

#### MENNEKES EverGUM receptacle combinations

- Signal yellow or black enclosure
- Available in different sizes
- Robust against impacts and the effects of external force



3

#### Accessories for fastening on lamp-posts

- An individual solution for your particular requirement



Here you can find our AMAXX product video

## Simply take energy to where it is needed Indoor and outdoor mobile applications.

An intelligently planned permanent installation and professional quality is the be-all and end-all of every event infrastructure. Mobile solutions are the perfect supplement in this regard; they can be used flexibly to make energy available at every point in trade fair halls or conference centers.

Whether exhibitor, stand builder, event organizer – use of mobile distributors makes it possible to make energy accessible at any point desired in the event facilities. In the set-up phase, and when the trade fair or a conference event is in full-swing, requirements – usually changing requirements – will always be imposed on the power supply, guaranteed. Whether for tools, generators, operation of lighting systems, ventilation, multimedia equipment, stage technology or servers.

Particularly when changing trade fair events event formats are on the agenda at conferences, mobile sub-distribution with MENNEKES solutions really pay off.



## Simply take energy to where it is needed Indoor and outdoor mobile applications.

1

### AMAXX trade-fair stand combination

- Safe distribution on-site
- Robust enclosure
- On/Off switch can be integrated
- Fusing on-site (for example with fire protection switch in accordance with DIN VDE 0100-420)
- Available with or without supply cable



2

### EverGUM trade-fair stand distributor

- Can be integrated in the trade fair stand (walls)
- Available with suspension or hang-up fixture



Here you can find our AMAXX product video

## Simply take energy to where it is needed Indoor and outdoor mobile applications.

3

### EverBOX – mobile distributors

- Robust
- Stackable
- Easy handling with integrated handles



4

### Mobile EverGUM distributors

- Ground clearance prevents water ingress
- Robust
- Colour – signal yellow
- Available with or without supply cable



## Mobile applications for trade fair stands

### Suitable distributors for on-site implementation.

Professionals ensure that the mobile distributors are suitable for harsh everyday operation and that they satisfy the rigorous requirements stipulated in BGV A3. For example, the installed SCHUKO® receptacles consistently satisfy the new standard regulations of set out in DIN VDE 620-1 for mobile devices. MENNEKES mobile distributors are impact-resistant, dimensionally stable, weather-resistant and resistant to aging. For safety of man and machine the energy powerhouses are equipped with protective switches, RCD devices and circuit breakers that are in-line with the requirements. These are accessible directly on-site. Should the need arise, this saves the time-intensive trip to the main distribution. Thus the mobile distributors are ideally suited as trade fair stand supply units with suspension and hang-up fixture.

In this regard, functionally and spatially they adapt perfectly to the specific requirements: Through suspension/hang-up and set-up they integrate effectively in every trade fair stand, and they can be individually fitted with CEE plugs and sockets SCHUKO®, RCD and MCB switches, switch-On/switch-Off elements, load-break switches or energy meters.



EverBOX –  
mobile distributors



Mobile EverGUM  
distributors



EverGUM trade-fair  
stand distributor



AMAXX trade-fair  
stand combination

## Mobile applications for trade fair stands Suitable distributors for on-site implementation.



MENNEKES develops mobile distributors suitable for harsh event operation which meet the rigorous statutory requirements, as well as individual requirements!





## Event technology indoors and outdoors

### CEE plugs and sockets in black.

In many cases the power supply of the event area must not be visible. The technology on stage, on television or for open-air events must remain concealed from the eye of the spectator.

Here as well, MENNEKES offers suitable solutions with CEE plugs and sockets in black. The light of the spotlights is not reflected so that the CEE plugs and connectors, receptacle combinations and mobile distributors are virtually invisible. MENNEKES offers a broad spectrum of CEE plugs and sockets and CEE combinations for these special applications.

In a functional black design, like all products from MENNEKES, they are likewise configured for extreme, failsafe, continuous operation.



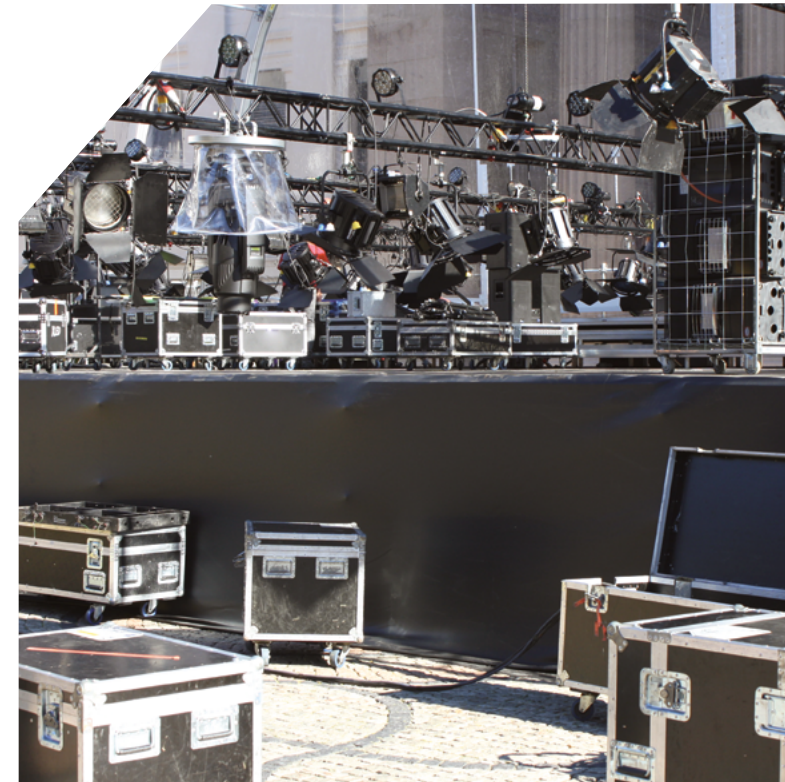
CEE-plugs and connectors



Receptacle combinations



Mobile distributors



## Event technology outdoors configured for the harshest conditions.

At events in soccer stadiums, for example, the plugs and sockets are subjected to the harshest conditions. For power supply of solariums for the lawn, the plugs and sockets are on the freshly-mown lawn. This means that grass cuttings can get on the contacts. The deposits then collect in the receptacle. This can cause the plugs and sockets to „deteriorate“. With X-CONTACT MENNEKES has the optimal solution for this situation.

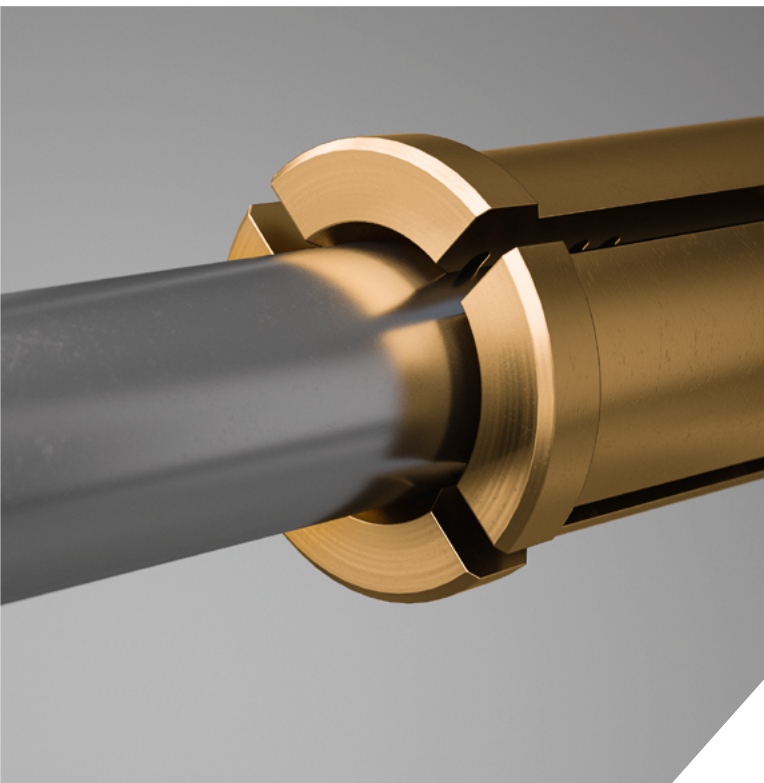
Industrial plugs and sockets for 63 A and 125 A are often subjected to the most extreme stresses: They must function reliably in spite of contamination and wet conditions. Conventional CEE plugs and sockets were always a compromise between operating convenience and contact quality: you got either the one or the other. Previously, this dilemma appeared to be unavoidable due to the physical conditions. With X-CONTACT, MENNEKES is now presenting a system that combines the utmost reliability of the electrical connection with the utmost operating convenience. Secure contact and simple handling are now at the same high level, even at currents of 63 A or 125 A.



Here you can find the video of our X-CONTACT contact sleeves



## Event technology outdoors configured for the harshest conditions.



This is made possible through the special pretreated material, innovative workmanship, and the new shaping. Look into the opening of an X-CONTACT sleeve and you will recognize the intelligent principle: The x-shaped slotting and grooving of the inner wall offers specific advantages in the application. The new sleeves defy the harshest conditions. The interaction of spring suspension and grooving not only guarantees secure contact closure, it also offers the practical side-effect that all types of contamination will be brushed off when inserting and withdrawing. Corrosion on surfaces is also properly scraped off through the spring effect of the sleeves.

Get more information on the new generation of contact sleeves at:  
[www.MENNEKES.org](http://www.MENNEKES.org)



Here you can find the video of our  
X-CONTACT contact sleeves



## Your superb performance is our top priority Highest quality – in an individual solution!

If a superb performance is involved, then in most cases individual solutions are required. This is where MENNEKES really shines, not just with the highest quality on the product level, but also in the personal support of the project. For example, the Munich Staatstheater was also individually advised and equipped with specific, custom-made solutions.

In the trade fair area, the requirements are indeed fundamentally similar everywhere – however, usually the implementation must be planned specifically and a new solution must be found due to local particularities. For example, for the outdoor area of Messe Frankfurt we implemented free-standing solutions: Here lockable energy posts and pillars with solid stainless steel enclosures were the optimal choice. Not only protection against weather influences, but also protection against vandalism were the top priorities in this regard. A vandal-proof and robustly safeguarded access for authorized personnel only were provided in a custom-made implementation.

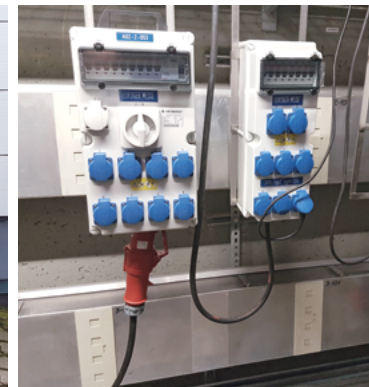
For Messe Wien special narrow structural shapes were desired, for which a custom-tailored implementation was provided. For the Basel Exhibition Center energy and data were implemented in a combined solution. In this regard network components were integrated in the energy distribution that enable the individual trade fair stands not only to be supplied with energy, but also with network connections at the same time.



## Your superb performance is our top priority Highest quality – in an individual solution!

### References:

- City Cube Berlin, Germany
- Horlemann, Mobile Energy GmbH, Uedem, Germany
- Landesmesse Stuttgart, Germany
- Messe Augsburg, Germany
- Messe Frankfurt, Germany
- Messe Hamburg, Germany
- Messe Leipzig, Germany
- Public broadcasting institute WDR and ZDF, Germany
- Munich State Theater, Germany
- Ville d'Enisheim, Enisheim, France
- World Forum, Den Haag, The Netherlands
- Messe Wien, Austria
- Basel Exhibition Center, Congress Center Basel, Switzerland



## Contact persons at MENNEKES.



**Do you have questions about our solutions and products?  
We are happy to be here for you:**



**Stefan Schlabach**

Phone: + 49 2723 41-429

Fax: + 49 2723 41-49429

[stefan.schlabach@MENNEKES.de](mailto:stefan.schlabach@MENNEKES.de)

**You can find our contact persons on our website:**



## MY POWER CONNECTION

### We are MENNEKES.

The MENNEKES Group is the world's leading provider of industrial plugs and sockets and e-mobility charging solutions. Our „type 2“ charging plug has been the official standard connector for electric vehicles throughout the European Union since 2014. Since our family-owned company was founded in Germany's Sauerland region back in 1935, it has spread around the world and is currently represented in 90 countries by subsidiaries with a total workforce of around 1,400 employees.



We produce plugs and sockets, receptacles and receptacle combinations in a vast range of types and models.

Our robust, long-lived solutions are deployed wherever electric power needs to flow reliably and consistently: in industrial applications, railway and transport companies, mining and shipbuilding industry, in container ports and at airports, on trade exhibitions, in stadiums and data centers. In the field of e-mobility, MENNEKES supplies appropriate solutions and equipment for future mobility. Our range includes charging plugs and cables, intelligent charging columns and wallboxes, billing services and a network of trained installers – for private, industrial, commercial and public applications. For the automotive industry and its suppliers, we also make charging inlets and cables for electric cars.